



Reef Check
MALAYSIA

2025

**ANNUAL
REPORT**



Table of Contents

A WORD FROM OUR CEO 04

VISION & MISSION 05

WHAT WE DO 06

WHERE WE WORK 07

2025 MILESTONES 08

SCIENCE, RESEARCH & DATA 10

SUCCESS STORY 12

COMMUNITY STORIES 13

EVENT HIGHLIGHT 14

SPECIAL SPOTLIGHT 16

An underwater photograph of a coral reef, showing various types of coral and the blue water. The image is used as a background for the table of contents.

SOCIAL MEDIA & PRESS REACH	18
FINANCIAL REVIEW	19
MEET THE TEAM	20
SCIENTIFIC BOARD & TRUSTEES	22
SPONSORS & SUPPORTERS	23
COLLABORATORS	25
CHALLENGES & SOLUTIONS	27
FUTURE GOALS & INITIATIVES	28
ACKNOWLEDGEMENTS	29
DO YOUR PART	30
SUPPORT US	31

A WORD FROM OUR CEO

2025 was a busy year - lots of great things happening, and I think we are laying a solid foundation for the coming years.

Starting with the bad news, our 2025 survey data show a **continuing decline in coral reef health around Malaysia**. While a lot of this can be attributed to the 2024 mass coral bleaching event, more needs to be done to protect coastal marine ecosystems – not just reefs, but mangroves and seagrasses, too. These three ecosystems are ecologically connected, and the health of any one of them affects the health of the others. These ecosystems are the cornerstone of livelihoods for thousands of small scale fishers in coastal areas - and contribute to food security for all of us. Not to mention being important tourism assets. So we have various reasons to look after them.

And this is where we move to the good news! **Our Community Marine Conservation Groups (CMCGs) grow from strength to strength**, with growing programmes in all locations. We believe local communities should play a central role in managing the natural resources their livelihoods rely on - as well as contributing to conservation. The CMCGs are showing how true that is - over 160 trained members, out there doing good work to protect and conserve the resources that provide their food and livelihoods.

We also recognise that the people working on the ground need more support from government. So, 2025 has seen **our advocacy activities grow**, culminating in a **presentation at the end of the year to the Parliamentary Select Committee for Environment, Science and Plantation**, at the invitation of the Chair of the Committee, YB Datuk Haji Ahmad Amzad Hashim, MP for Kuala Terengganu. We are grateful for the opportunity and look forward to more effective collaboration in the future.

We look forward to more of the same in 2026 — stronger relationships with government bodies, continued efforts with local communities, and more of your support to help make the changes we need if we are to conserve these critical ecosystems.

Here's to a better 2026!

CHIEF EXECUTIVE OFFICER
JULIAN HYDE



VISION

Sustainably managed marine ecosystems in Malaysia

MISSION

To bring together diverse stakeholders to generate knowledge, strengthen management, improve practices and advocate for the long-term sustainability of Malaysia's marine ecosystems

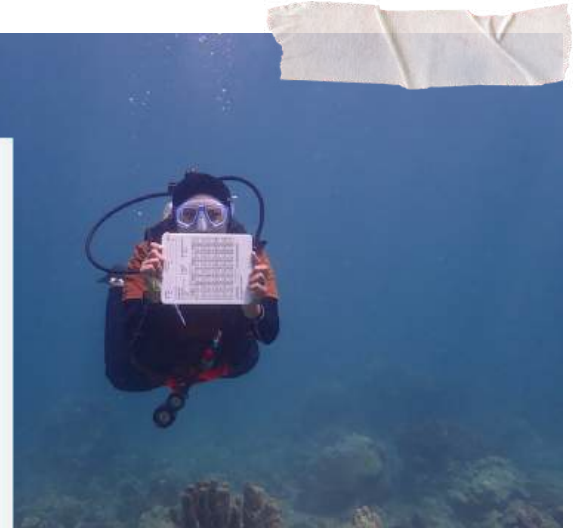
WHAT WE DO

THREE CONSERVATION PILLARS

SCIENCE

We conduct **reef rehabilitation** programmes and **reef resilience surveys** around various islands, the results of which are used in **management plans** for these islands. We also monitor for **coral bleaching** around Malaysia.

We also **train certified divers to conduct annual Reef Check surveys** of coral reefs around Malaysia. The data collected over time reflect the changing status of coral reefs and indicate what steps can be taken to conserve them.



ADVOCACY

We raise **awareness** of the importance of coral reefs and the valuable ecosystem services they provide. We promote **sustainable marine tourism** through Green Fins, Green Hotels, and Eco-Friendly Snorkel Guide programmes.

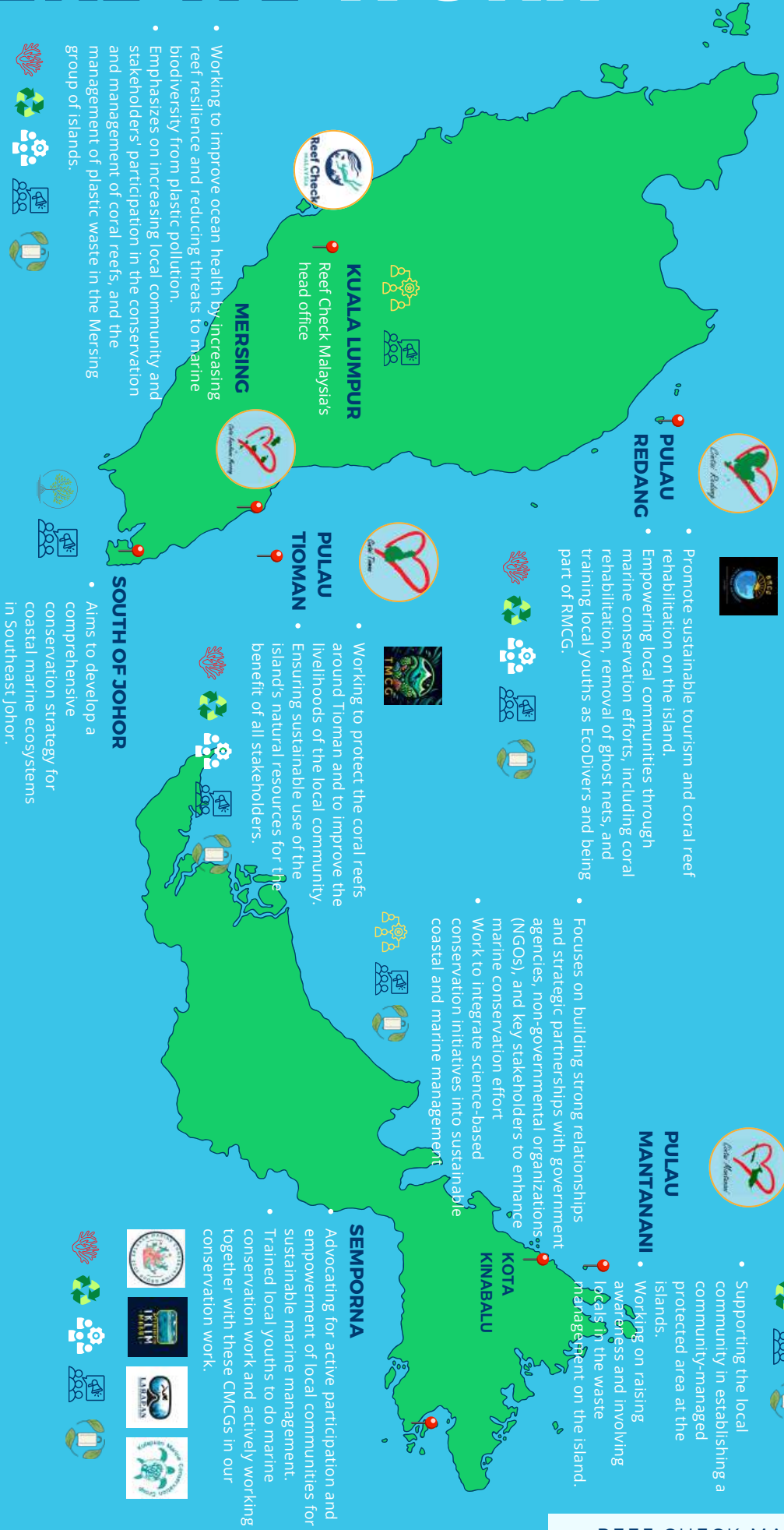


MANAGEMENT

We train island communities to be **marine conservation leaders**. One of our goals is to **involve local communities** in the management and conservation of their island's resources, which contributes to its success.



WHERE WE WORK



- Working to improve ocean health by increasing reef resilience and reducing threats to marine biodiversity from plastic pollution.
- Emphasizes on increasing local community and stakeholders' participation in the conservation and management of coral reefs, and the management of plastic waste in the Mersing group of islands.



- Aims to develop a comprehensive conservation strategy for coastal marine ecosystems in Southeast Johor.



- Working to protect the coral reefs around Tioman and to improve the livelihoods of the local community.
- Ensuring sustainable use of the island's natural resources for the benefit of all stakeholders.

- Focuses on building strong relationships and strategic partnerships with government agencies, non-governmental organizations (NGOs), and key stakeholders to enhance marine conservation effort.
- Work to integrate science-based conservation initiatives into sustainable coastal and marine management.



- Supporting the local community in establishing a community-managed protected area at the islands.



- Working on raising awareness and involving locals in the waste management on the island.

- Advocating for active participation and empowerment of local communities for a sustainable marine management.
- Trained local youths to do marine conservation work and actively working together with these CMCs in our conservation work.



2025 MILESTONES

REEF REHABILITATION

6,617
coral fragments rescued
and planted in **11 sites**



BEACH & UNDERWATER CLEANUPS

12,951
Crown-of-Thorns starfish
removed from reefs



3,356.3 kg
ghost nets removed
from the sea

6,050.59 kg
rubbish prevented from polluting
the marine environment

WASTE MANAGEMENT PROGRAMME

49,460.1 kg
waste collected

5,625.7kg
waste recycled



SUSTAINABLE TOURISM EFFORTS

MOORING BUOYS
10 installed

GREEN FINS ASSESSMENTS
39 members as of 2025

**GREEN HOTELS
STANDARD ASSESSMENTS**
24 passed as of 2025



STAKEHOLDER CONSULTATIONS

2,177
people consulted for
opinion & feedback



COMMUNITY SKILLS TRAININGS & WORKSHOPS

408
people equipped with
various new skills



EDUCATION & AWARENESS INITIATIVES

2,768
students and public participation

SCIENCE, RESEARCH & DATA

| ANNUAL SURVEY REPORT 2025

On average, the coral reefs are found to be at “**fair**” level of living coral, at **39.94%***

Abundance of most indicator fish and invertebrates remains **low****

297 sites were surveyed in 2025 (2024:315), both in established Marine Protected Areas (MPAs) and non-protected areas

Indicators of disturbance and pollution are **high** in many reef areas***



1. * This is a **4.71% decrease** compared to 2024 (44.65%). This deterioration can be attributed to a number of factors, key among which are the 4th Global Coral Bleaching Event that occurred in 2024, unsustainable tourism, pollution and fishing activities. 63% of the islands/areas surveyed saw a decrease in Live Coral Cover (LCC), a key coral reef health indicator.
2. ** Historical over-harvesting and low natural populations might be reasons for this, but many of the sites surveyed, particularly in Sunda Shelf region, are in marine protected areas, where protection might be expected to encourage populations to grow.
3. *** 82.50% of the locations surveyed are impacted by trash, 80% by discarded fishing nets, and 57.50% by boat anchor damage. Bleaching was documented at 67.50% of the locations surveyed. In Sabah, 33.33% of the locations surveyed recorded dynamite fishing damage.

SCIENCE, RESEARCH & DATA

| ANNUAL SURVEY REPORT 2025 (RECOMMENDATIONS)

- The report recommends **improving marine resource management by addressing local impacts and involving local communities more actively**. Giving local stakeholders a stronger voice in decisions that affect their livelihoods can lead to better management and stronger conservation outcomes.
- Particular emphasis is placed on **building both ecological and economic resilience**. Resilient reefs are better able to withstand or recover from the growing threats of climate change, while resilient communities have diversified livelihoods and do not rely solely on coral reefs for their income.
- The government is encouraged to:
 1. Transition from mass tourism to a more **sustainable and environmentally responsible tourism model**.
 2. Establish a **joint management body** that includes local communities in the management of Malaysia's marine protected areas.

For more details, you may access the report:
[2025 Status of Coral Reefs in Malaysia](#)

| CORAL REEF BLEACHING SURVEYS 2025

The 4th Global Coral Bleaching Event that took place in 2024. Malaysia's coral reefs were not spared from this event, with coral bleaching documented at nearly 90% of the islands/areas surveyed.

In 2025:

- Our teams continued periodic coral bleaching surveys and positive signs of coral recovery has been recorded.
- While there is little we can do at a local level, our teams actively identified sites attacked by coral predators (Crown of Thorns starfish and drupella snails) and removed them.
- We now have a coral bleaching reporting form (available on our [website](#)) which allows the public to also report any sightings of coral bleaching to our team.





SUCCESS STORY

From Learning to Action: Advancing Sustainable Tourism in Mersing

Through our close work with island communities, RCM recognised **shared** challenges and opportunities across different locations. To encourage **peer learning** and **knowledge exchange**, we have organised **inter-island visits** that allow communities to learn directly from one another.

What was this visit about?

Funded by UNDP Malaysia under the Sustainable Tourism Recovery Programme, this initiative aims to **strengthen livelihoods** in Mersing by promoting **sustainable ecotourism**, supporting **local businesses** — particularly women-led enterprises — and improving **waste management** practices to create more resilient and sustainable income opportunities for the community.

Who was involved?

The programme brought together **community representatives** from the **Mersing islands and mainland**, with a focus on empowering women in sustainable ecotourism. They were hosted by Diana (RCM staff in Mantanani) and **local Mantanani islanders** involved in recycling, alternative livelihoods, and sustainable tourism.

What was the outcome?

Throughout the programme, participants engaged in various learning activities and immersed themselves in the host community's culture. They also identified **practical initiatives** and **business ideas** to implement in Mersing, ensuring the experience translated into tangible, long-term community impact.

"This programme gave us an opportunity to learn about each other's cultures and exchange ideas. As hosts, we worked closely with the villagers and JPKK to prepare and welcome the Mersing community. The homestay operators even prepared traditional dances to welcome them. I am very happy to see everyone united. Each island community has its own uniqueness and I hope that programs like this will continue so that we can all learn from each other."

Nor Diana Amylia,
Local Mantanani RCM staff



COMMUNITY STORIES



"I first heard about the Redang Marine Conservation Group (RMCG) through my friends and when I attended an awareness program by RCM in 2023. I truly appreciate the training I've received since I've joined the RMCG.

I've also gained knowledge on how I can contribute to take care of my island and I love that I have the opportunity to care for the surrounding islands in Terengganu.

I do hope that more youths in Redang Island will lean towards conservation and work together to keep the coral reefs in our island safe".

Hassanudin bin Samsuddin
Member of RMCG
Recreation Supervisor (full-time job),
The Taaras Beach & Spa Resort



"I first participated in the waste management program on Pulau Selakan and now serve as its coordinator. I also work closely with the villagers in various conservation activities organised by RCM.

This waste management program plays an important role in reducing waste on the beach and in the sea, helping to protect and preserve our marine ecosystem. I have also observed a growing awareness within our community about the importance of keeping our village clean."

Sakilah Amirah
Waste Management Coordinator
Member of Selakan Marine
Conservation Group - SMCG



"Through the EcoDiver program, I gained experience in SCUBA diving and conducting Reef Check surveys, as well as increased my knowledge and familiarity with various marine life and its ecosystems. The survey activities helped build my discipline, self-confidence, and responsibility towards marine life and helped me realise the importance of caring for the environment."

Erni Natikaf,
EcoDiver,
Tioman Island.

"I participated in several programs by RCM, including the Community Environmental Leadership Camp, where I learned about marine ecosystems and gained a better understanding of the importance of marine sustainability. These programs not only promote positive change within the community, but also provides a platform for youth — especially those with limited educational opportunities — to become more responsible and committed individuals. In addition, it helps to strengthen participants' awareness of and concern for the environment."

Muhd. Ihsam bin Abdal
Pemimpin Belia IKLIM Mabul
Teacher at alternative school for
undocumented community



EVENT HIGHLIGHTS



COMMUNITY-BASED MARINE RESOURCE MANAGEMENT IN SOUTHEAST ASIA:

BENEFITS, CHALLENGES AND LESSONS FROM 4 COUNTRIES

Reef Check Malaysia's **first UN Ocean Conference 2025 Side Event**. This webinar explored CBMRM from three key perspectives: Community, Policy/Legal, and Science.

Relive the experience here:

<https://reefcheck.org.my/rcms-unoc3-webinar/>



BEVERAGE BOTTLES (PLASTIC)
74,639

CIGARETTE BUTTS
63,695



GROCERY BAGS (PLASTIC)
49,441



PLASTIC/FOAM PIECES
37,330



FOOD WRAPPERS (CANDY, CHIPS, ETC)
22,145



INTERNATIONAL COASTAL CLEAN-UP (ICC) 2025

Date: September 2025

Location: 104 sites across Malaysia

Items collected: **463,016 items**

Trash collected: **28,573.23 kg**

Number of volunteers: **8,347 people**

Full report: [2025 ICC Final Report Malaysia](#)



KOD BLUE: LAUT NEEDS YOU

Our annual awareness event for the International Coastal Cleanup Day (ICC) in Malaysia.

Date: 20 September 2025

Location: Kg. Juara, Tioman Island

Trash collected:

- 434.5 kg (beach & underwater cleanup)
- 198 Crown-of-Thorns starfish (underwater cleanup)

We warmly invite you to be part of **Kod Blue 2026**, whether as a valued sponsor or a participating supporter.



SPECIAL SPOTLIGHT: SPONSOR

Issue 8

YAYASAN HASANAH



A foundation of Khazanah Nasional

Yayasan Hasanah (YH) has been a sponsor and supporter of RCM's programs since 2016.

- 2016-2021: Mantanani Island (establishment of protected area and locally-managed marine area - LMMA)
- 2022-2025: Perhentian Island and Redang Island (Building capacity of island communities)
- 2026-2028: Redang, Tioman and Mantanani Islands as well as Semporna (Conserve Marine Biodiversity and Ecosystem Resilience with Local Communities)

Why did Yayasan Hasanah choose to partner with Reef Check Malaysia?



Puan Siti Kamariah Ahmad Subki

"At Yayasan Hasanah, we believe that lasting conservation begins with the people who call these ecosystems home. Reef Check Malaysia has shown us that when communities are trusted, equipped, and empowered, they become the strongest stewards of their environment."

By linking conservation with sustainable livelihoods, this work honours the deep connection between nature and culture. Together, we are building a model of conservation where communities thrive alongside healthy, resilient ecosystems."

Puan Siti Kamariah Ahmad Subki
Managing Director
Yayasan Hasanah



Marine Roundtable session with RCM

SPECIAL SPOTLIGHT: OUR AMBASSADORS

What inspired you to be involved in marine conservation and subsequently agree to be an ambassador for RCM?



*"I've been a diver since I was 17 — the ocean has always felt like home. But it was during my time working at an eco-resort in Perhentian, surrounded by researchers and conservationists, that I realised the ocean needs more than love — it needs protection. That experience led me from eco-tourism into more hands-on conservation work. So when the opportunity came to join Reef Check Malaysia as an ambassador, alongside my bestie Baki, it felt like a natural next step — a way to use my platform and voice to contribute more meaningfully to marine conservation" - **Sharifah Sofia**.*

*"I think it's my love of diving and exploring the diversity of life underwater and seeing that there is still space to grow in sharing the importance of this piece of paradise" - **Baki Zainal**.*

Meet Reef Check Malaysia's dynamic ambassadors, **Baki Zainal** and **Sharifah Sofia** - passionate advocates who bring energy and heart to our conservation efforts.



FAVOURITE MEMORY WITH RCM IN 2025?

Sofia: *Kod Blue is always a highlight. There's something powerful about seeing different people come together with a shared purpose for the ocean. It's energetic, hopeful, and reminds me that community action really matters. I really hope it continues to gain traction in the coming years, so more people can be part of it and experience that same sense of purpose and impact.*

Baki: *I visited a community project on Selakan island initiated by Reef Check Malaysia. It aims to empower the local community in understanding the importance of caring for their own island and community. I got to witness how just after less than a year, the youth has taken the responsibility in caring for the underwater world around them - and what a great job they have done!*

WHAT ARE YOUR HOPES FOR MARINE CONSERVATION?

Sofia: *My hope is for more wins for nature. We need more people to care, more awareness translated into action, and more long term commitment to protecting our marine ecosystems. Conservation shouldn't feel like an option. It should be part of how we live, travel, and make decisions. If we can shift our mindsets collectively, the ocean will stand a better chance.*

Baki: *I really hope that we can spread more awareness and help more locals understand that their voices and actions are powerful, and that they can do so much more for their community and island.*

SOCIAL MEDIA REACH



215 posts in 2025 | **254,292** reach
16.06% engagement rate by reach | **10,123** followers



217 posts in 2025 | **146,049** reach
10.8% engagement rate by reach | **14,791** page followers



74 posts in 2025 | **72,842** impressions
18.98% engagement rate | **3,360** followers

PRESS REACH



Public Engagement

167 talks, conferences, strategic meetings and events



Media

3 Radio and Podcasts Interviews
1 TV interviews



Awards and Recognitions

Mission Blue Award 2025

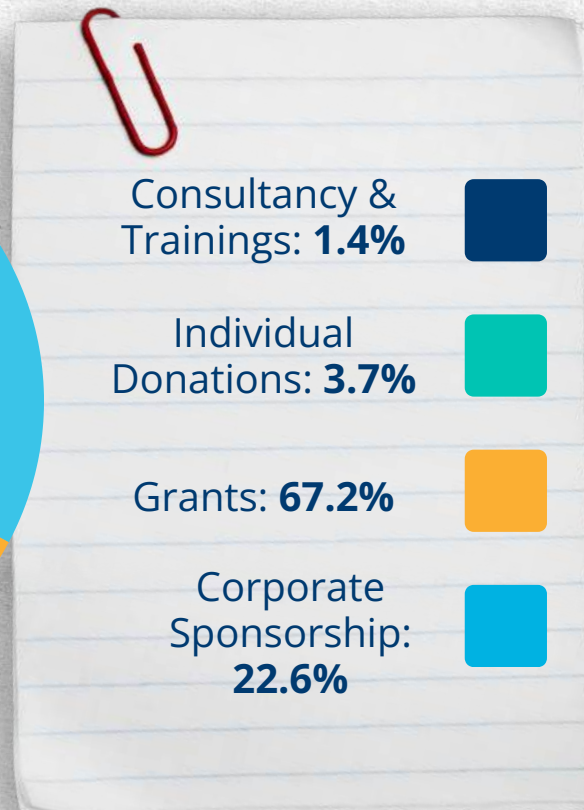
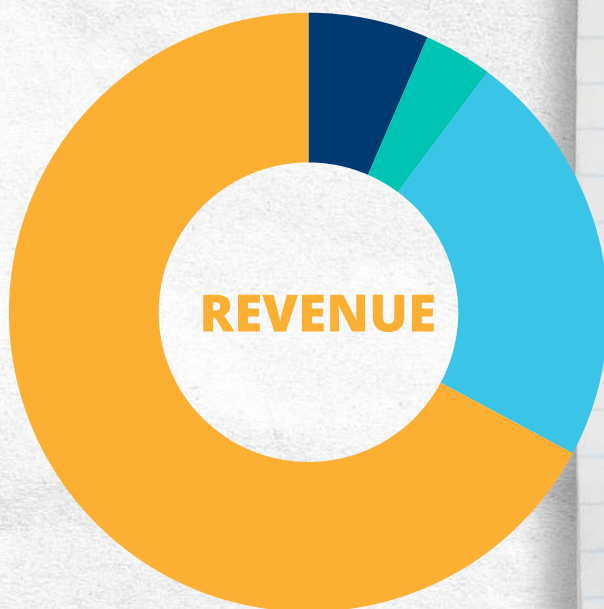
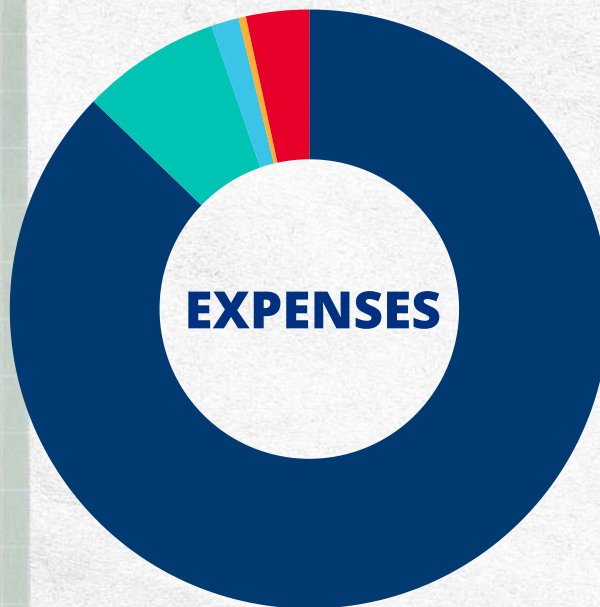
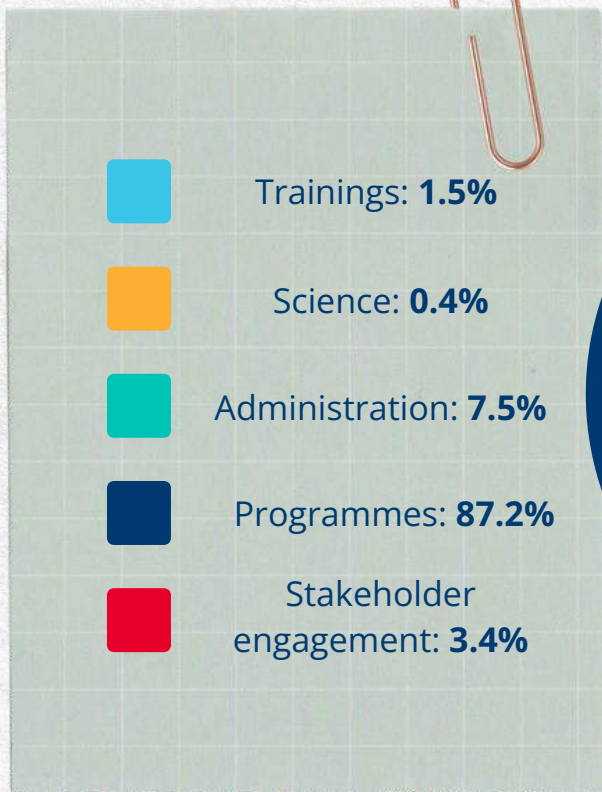


Scientific Publication/Journal:

1. [The 4 Global Coral Bleaching Event In Malaysia: Insights, Outcomes, And Paths Forward](#)
2. [Local Community-Based Marine Management And Conservation In Malaysia](#)

Also published our [Modul Latihan Pemuliharaan Marin](#)

FINANCIAL OVERVIEW





MEET THE TEAM

HEADQUARTERS



Julian Hyde
Chief Executive
Officer



Theresa Ng
Chief Operations
Officer



Alvin Chelliah
Chief Programmes
Officer



Jasmin Saad
Chief Public Policy
and Advocacy Officer



Nazirul Amin
Senior Programme
Manager



Liyana Salleh
Communications
Manager



Pricynthia Nesha
Environmental
Education Officer



Maisarah Aminah
Admin & HR
Manager



Nurul Balqis
Account Assistant

CINTAI TIOMAN



Shahir Yaman
Programme
Manager



Chen Sue Yee
Science Officer



Suhaimi Mahadi
Assistant Programme
Manager



Nurasfarlela Basir
Assistant Programme
Manager

CINTAI MERSING/ SOUTH OF JOHOR



Atteleth Don Peris
Programme
Manager



Badriah Zainudin
Assistant Programme
Manager



Raveena Kim Lai
Assistant Programme
Manager

CINTAI REDANG



Putri Asma
Programme Manager



Muhaimin Hou
Assistant Programme
Manager

KOTA KINABALU & MANTANANI



Nadhirah Mohd Rifai
Senior Programme
Manager



Calvin Jenneh
Assistant Programme
Manager



Diana Amylia
Assistant Programme
Manager

SEMPORNA



Adzmin Fatta
Senior Programme
Manager



Aiman Shakirah
Assistant Programme
Manager



Nurhazatul Azwa
Assistant Programme
Manager

REEF CHECK MALAYSIA'S SCIENTIFIC BOARD



Dr. Jillian Ooi
Marine Geographer
Department of Geography,
Universiti Malaya



Mr. Affendi Yang Amri
Research Officer
Institute of Ocean and
Earth Sciences (IOES),
Universiti Malaya



Dr. Gopinath Nagaraj
Principal Consultant
FanLi Marine and
Consultancy Sdn. Bhd.

REEF CHECK MALAYSIA'S TRUSTEES



Datuk Hiswani Harun
Independent Director
Board of the Malaysian Green
Technology and Climate Change
Corporation (MGTC)



Ivy Wong Abdullah
CEO Malaysia
Permian Global



Kevin Hiew Wai Phang
Former Head
Marine Parks Division,
Department of Fisheries,
Malaysia.



Lim Jit Cheng
Partner
Deloitte



Ruth Yeoh
Executive Director
YTL Singapore Pte Ltd



Ralph Justin Dixon (Alternate)
Executive Director of Sustainability
YTL Corporation Berhad

SPONSORS



SPONSORS



Royal Bank
of Canada



MST GOLF

SUPPORTERS

Supported by:



Federal Ministry
for the Environment, Climate Action,
Nature Conservation and Nuclear Safety



INTERNATIONAL
CLIMATE
INITIATIVE



Deutsche Gesellschaft
für Internationale
Zusammenarbeit (GIZ) GmbH

based on a decision of
the German Bundestag

The "Coral restoration toolkit for community-based action at the east coast of Sabah" project is supported by the IKI Small Grants programme strengthening local solutions for effective climate and biodiversity action. IKI Small Grants is funded by the Federal Ministry for the Environment, Climate Action, Nature Conservation and Nuclear Safety (BMUKN) and is run by Deutsche Gesellschaft für Internationale Zusammenarbeit (GIZ) GmbH. It is part of Germany's International Climate Initiative (IKI).

**Reef Check Malaysia is proudly supported by SEA Grants.
SEA Grants is an initiative of the GEF/UNEP/UNOPS SCS SAP Project.**

FUNDED BY



LED BY



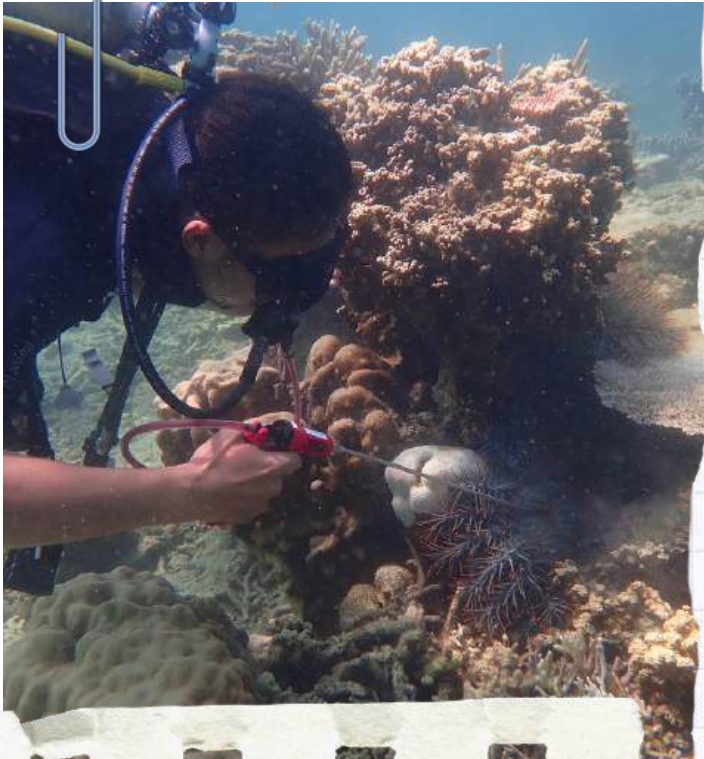
IN PARTNERSHIP WITH



Supported
by



COLLABORATORS



TIOMAN ISLAND

- Jabatan Pendidikan Negeri Pahang
- Juara Turtle Project
- Universiti Teknologi Malaysia
- Nottingham University
- Department of Fisheries (DoF)
- Jabatan Laut Malaysia
- Perhilitan
- Alam Flora
- Jabatan Alam Sekitar
- MPKK Tioman
- Tioman Development Authority (TDA)

SOUTH OF JOHOR

- Pengerang Independent Terminals Sdn Bhd (PITSB)
- Pejabat Pendidikan Daerah Kota Tinggi
- Majlis Perbandaran Pengerang

MERSING

- MISC Group
- Department of Fisheries (DoF)
- Lembaga Kemajuan Ikan Malaysia (LKIM)
- Mersing District Office
- Mersing District Council
- Johor National Parks Corporation[AD1]
- Jabatan Pendidikan Negeri Johor
- Pejabat Pendidikan Daerah Mersing
- Mersing Tourism Association
- United Nations Development Programme (UNDP)
- Tengah Island Conservation
- SC Johnson
- Yayasan Johor Corporation
- Agensi Penguatkuasaan Maritim Malaysia (APMM)



COLLABORATORS

REDANG ISLAND

- Terengganu State Park
- Department of Fisheries (DoF)
- Universiti Malaysia Terengganu (UMT)
- Laguna Redang Island Resort
- Fuze Ecoteers
- National University of Singapore (NUS)
- PULIHARA

KOTA KINABALU & MANTANANI

- Pertubuhan Wanita Kampung Song-Song (WANIS)
- WWF - Malaysia
- Sabah Parks
- Marine Research Foundation (MRF)
- Borneo Marine Research Institute (BMRI)
- Sabah Dive Rangers
- Jabatan Pendidikan Negeri Sabah
- Dewan Bandaraya Kota Kinabalu (DBKK)
- Majlis Daerah Papar
- Persatuan Pengusaha Homestay Mantanani
- SK Pulau Mantanani

SEMPORNA

- Pemimpin Belia IKLIM Mabul
- Larapan Marine Conservation Group
- Kulapan Marine Conservation Group
- Selakan Marine Conservation Group
- Green Semporna
- Borneo Komrad
- Kesatuan Pelajar Sekolah Alternatif
- Pejabat Daerah Semporna
- Majlis Daerah Semporna
- Hartawan Stabil (Jeti Pelancong Semporna)
- Kementerian Pelancongan, Kebudayaan dan Alam Sekitar Sabah (KePKAS)
- Sabah Parks
- Amwil Deslen Management and Supplies PLT
- Department of Fisheries, Sabah
- SaBC
- Borneo Marine Institute (UMS)
- Semporna Aqua Planet
- Buwan Dive Resort
- Iskul Sama Dilaut Omadal
- Pom Pom Island Resort
- Seahorse Sipadan Scuba
- Puspabumi
- Kunak Darvel Marine Conservation Group
- Jawatankuasa Protokol Komuniti Larapan (JPKPL)

CHALLENGES AND SOLUTIONS

Over the years, RCM has come to believe that **local communities should take a more central role in managing the natural resources they rely on for food and livelihoods**. Our biggest challenge is ensuring sufficient capacity among local communities to empower them to effectively fulfil this role.

In 2025, we continued our efforts to **strengthen the Community Marine Conservation Groups (CMCGs)**. This has proven to be a very important vehicle to empower local communities to participate in managing the resources on which they all rely – be it as a food source, or for livelihoods in tourism.

We now support **9** established CMCGs.



Alongside the importance of including local communities in natural resource management, we have also come to believe that there is a need for **a more integrated approach to the management of natural resources**, which integrates terrestrial and marine ecosystems.

The Department of Fisheries Malaysia is responsible for managing the marine parks in Peninsular Malaysia, and we work with them on a number of programmes. But that's just the waters around the so-called "marine park islands". In fact, the islands are the responsibility of State governments.



We have to recognise that **most impacts to our marine parks are from land-based activities** - tourism growth, sewage pollution, land-use change, etc. But the mechanisms that protect the marine areas from developments on the island are not so strong.

Hence the concept of the **Protected Area Management Body (PAMB)**, a mechanism that would give all stakeholders "a seat at the table", giving them a voice in how the islands and marine parks are managed, in a joined up, integrated approach. We are talking to stakeholders - island and government - in Terengganu, Pahang and Johor state government agencies to work out how to make this a reality. Watch this space!

Oh - and look out for more on **resilience**, too!



FUTURE GOALS AND INITIATIVES

Looking ahead, we have just completed our strategic review and we will soon publish our 2026-2030 strategy.

Next year we are planning to both **strengthen existing CMCGs and expand to new areas**. We will provide training in a broader range of skills that will enable the CMCGs to operate more independently of RCM. And we are talking to communities in several locations about establishing new CMCGs – largely in response to invitations from those communities, who have seen the success of the first CMCGs and now want to participate.

Resilience is going to continue to be a central concept guiding all our activities moving forward – and the CMCGs play a key role here.

The three principal resilience factors – **physical impacts, herbivore populations and water quality** – can be managed on the ground locally, and our programme to work with State governments, alongside community groups, will contribute significantly to this.

Starting next year, we will be rolling out **stronger programmes to address these three key factors**. Together with **improved governance** to ensure meaningful participation by local communities.

We are looking forward to turning the tide on reef decline and securing long term food security and livelihoods for island communities.

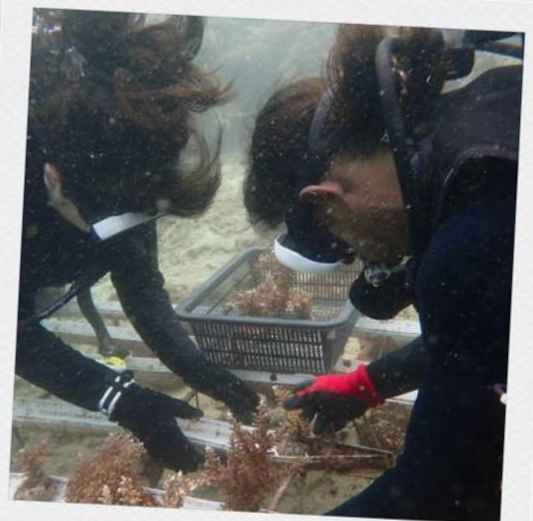


ACKNOWLEDGEMENTS

We would like to take this opportunity to thank **our many supporters**, without whom none of our work and progress would have been possible.

We are deeply grateful to our long-term sponsors — **Yayasan Sime Darby** in Tioman, **MISC Group** in Mersing, **Yayasan Hasanah and NCTF** in Redang, **Yayasan Hasanah** in Mantanani, and **IKI and KePKAS** in Sabah — whose support is invaluable. Beyond their individual contributions, they provide a strong foundation that enables us to expand our work with local communities, often complemented by smaller sponsorships from local companies. We are also thankful to the many private individuals whose contributions collectively make up around 10% of our funding.

RCM doesn't operate in a vacuum and we acknowledge the vital partners who help to make our programmes a success. From MPs, Federal government agencies, State governments, local municipalities, and on the islands themselves – not to mention the army of volunteers who keep our annual Reef Check survey programme going – we thank all our partners, and look forward to developing those relationships further in the coming years.



DO YOUR PART

Reduce Plastic Use

1

Limit the use of single-use plastics, such as bags, bottles, and straws. Opt for reusable alternatives and participate in local beach clean-up activities to prevent plastic pollution.

Every action counts.

No matter how small it may seem, each effort adds up to create meaningful change for our oceans. By choosing sustainable habits and championing responsible practices, we all have the power to protect marine life.

2

POSTCARD

Responsible Tourism

When engaging in water-based activities, such as snorkeling, diving, or boating, choose eco-friendly operators that adhere to responsible and sustainable practices. Respect marine life and their habitats during these activities.

Choose certified Eco-Friendly Snorkel Guides, Green Fins dive centres, and Green Hotel island operators. Full list on our website: www.reefcheck.org.my

Educate Yourself and Others

3

Stay informed about marine conservation issues and spread awareness within your community. Knowledgeable individuals are more likely to make sustainable choices and advocate for positive change.

4

Support Marine Conservation Organizations

Contribute to or volunteer with reputable marine conservation organizations. Many organizations actively work to protect marine life, restore ecosystems, and promote sustainable practices.

SUPPORT US

SAVE OUR MARINE ECOSYSTEMS

[DONATE](#)

GET INVOLVED

[VOLUNTEER FOR ICC](#)

[BE AN ECODIVER](#)

You can also Adopt seKarang!

[ADOPT SEKARANG](#)





Reef Check MALAYSIA



@reefcheckmalaysia | Reef Check Malaysia | @ReefCheckMY | @reefcheckmalaysiarcm



03- 21615948



Box 606, Lot 5.19-5.22, Wisma Central,
Jalan Ampang, 50450 Kuala Lumpur,
Malaysia



hello@reefcheck.org.my

www.reefcheck.org.my