



ANNUAL
REPORT
2020

REEF CHECK MALAYSIA

REEFS ARE DYING



BUT THERE IS **HOPE**

An underwater scene with a large shark swimming towards the right. Several smaller fish are swimming around it. The water is a deep blue color.

OUR VISION

SUSTAINABLY MANAGED CORAL REEFS IN MALAYSIA

OUR MISSION

TO BRING TOGETHER STAKEHOLDERS TO COLLABORATE ON
CORAL REEF MONITORING, MANAGEMENT, RESEARCH,
CONSERVATION, AND ADVOCACY

2020 was a year of momentous change, with the coronavirus pandemic affecting us all. I'd like to take this opportunity to thank all our amazing supporters who have helped in various ways, from volunteers who jumped onto survey trips with almost no notice to sponsors who have been flexible in adjusting programmes of work.

Despite the challenges, we have been able to complete our annual survey of the health of Malaysia's coral reefs – nothing short of a minor miracle considering the various movement restrictions throughout the year. The results of the surveys, which are reported separately, highlight our continuing concerns about reef health in some areas. Many impacts are tourism-related and, while the reduction in visitor numbers because of the pandemic might be expected to reduce impacts, in reality it is still too early to know whether this will be reflected in reef health in future years.

While many of our programme activities have been interrupted, we have still had a successful year with our various community-based programmes. Our teams in Tioman, Mantanani and Johor have continued to work with local stakeholders as best they can, and we have made progress in all three areas. Our focus remains on improving local participation in management while at the same time building community resilience through economic development.

SHEDDING LIGHT ON THE CORAL DILEMMA

A WORD FROM OUR GENERAL MANAGER

Coral reefs continue to be threatened by development. We are still not valuing them properly – the National Policy on Biological Diversity, the Convention on Biodiversity, the Aichi Targets – all describe ways in which we should be protecting our coral reefs...and yet compliance is patchy. Ecosystems too often seem to come a poor second to financial returns.

Perhaps the new tourism policy, combined with a need to build a different tourism industry post-covid, will help to move us towards a new approach to coral reefs that focuses on sustainable use and conservation, rather than continually trying to exploit them.

Our hope for **2021**, as we emerge from the pandemic, is that all stakeholders will join us in improving the protection of these important ecosystems.

Julian Hyde

General Manager of Reef Check Malaysia





ECOACTION

strengthen and expand coral reef monitoring & reporting



SCIENCE

improve our understanding of important reef processes like resilience & rehabilitation



ADVOCACY

advocate for coral reef conservation



MANAGEMENT

improve management of MPAs & reduce local impacts to coral reefs



FUNDING

establish sustainable funding mechanisms

WHAT WE DO



TIOMAN ISLAND

The Cintai Tioman programme began in 2013, to build social & ecological resilience on Tioman

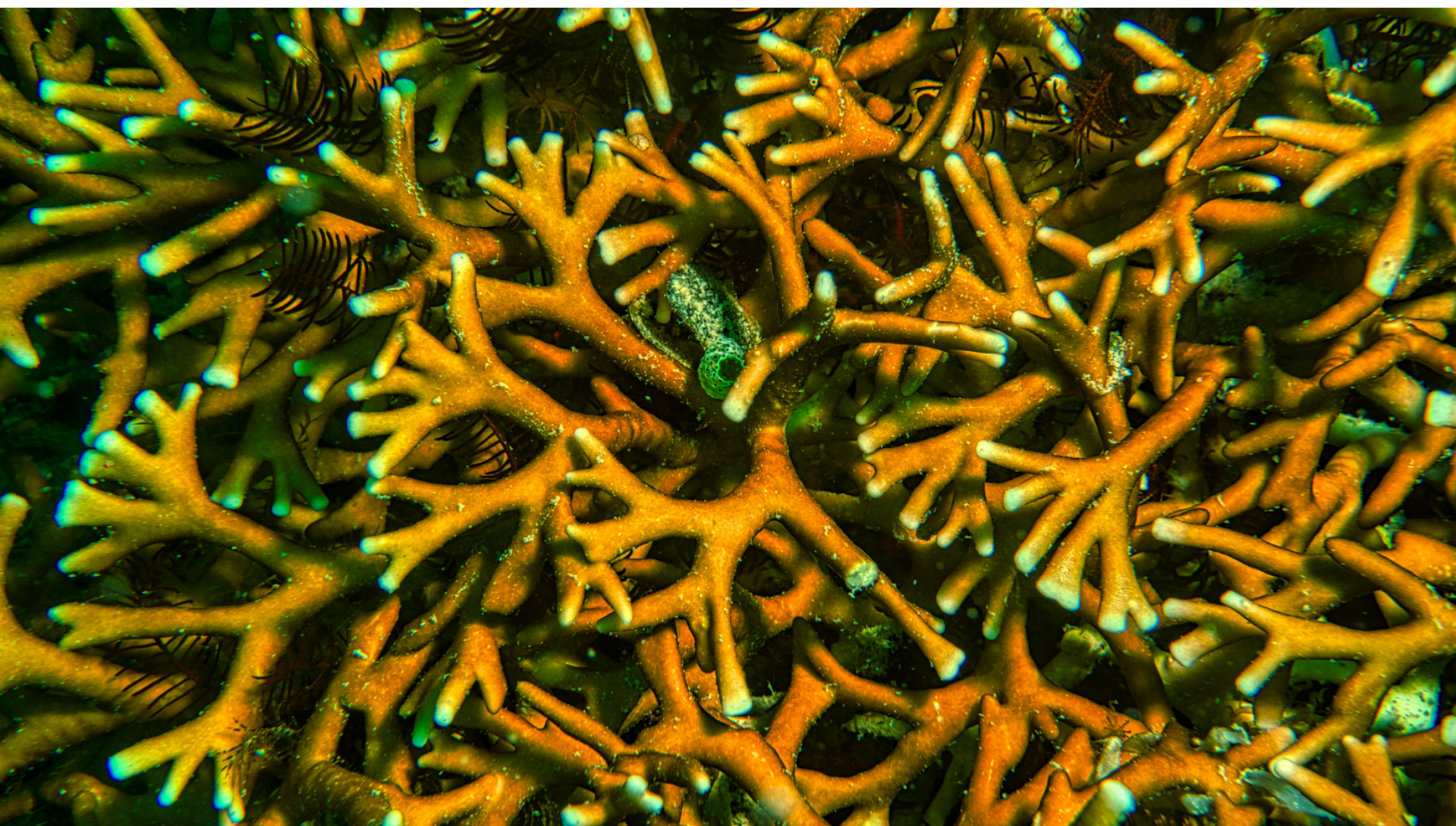
MANTANANI ISLAND

In 2014, Cintai Mantanani was established to support the local community in managing protected area at the islands

MERSING ISLANDS

The Heart of the Ocean programme started in 2020 and aims to support sustainable reef management, effective waste management & promote sustainable tourism in the 5 surrounding cluster of islands

WHERE WE WORK



2020 MILESTONES

MADE POSSIBLE BY YOU

SURVEYED 201 SITES
IN THE ANNUAL
REEF CHECK SURVEY
INVOLVING 64
VOLUNTEERS



COLLECTED 11 TONNES
OF TRASH FROM 70
BEACHES WITH THE
HELP OF 3,500 ICC
VOLUNTEERS



EQUIPPED 21
MANTANANI ISLANDERS
WITH NEW SKILLS AND
SOURCES OF INCOME IN
THE ECONOMIC
RECOVERY PROJECT



ASSESSED 7
ACCOMMODATIONS IN
TIOMAN ON GREEN
HOTEL STANDARDS

SET UP 3
NEW RECYCLING
COLLECTION CENTRES
ON TIOMAN



EXTRACTED 21,186.5KG
OF ORGANIC &
INORGANIC WASTE
FROM THE BEACHES
OF MANTANANI

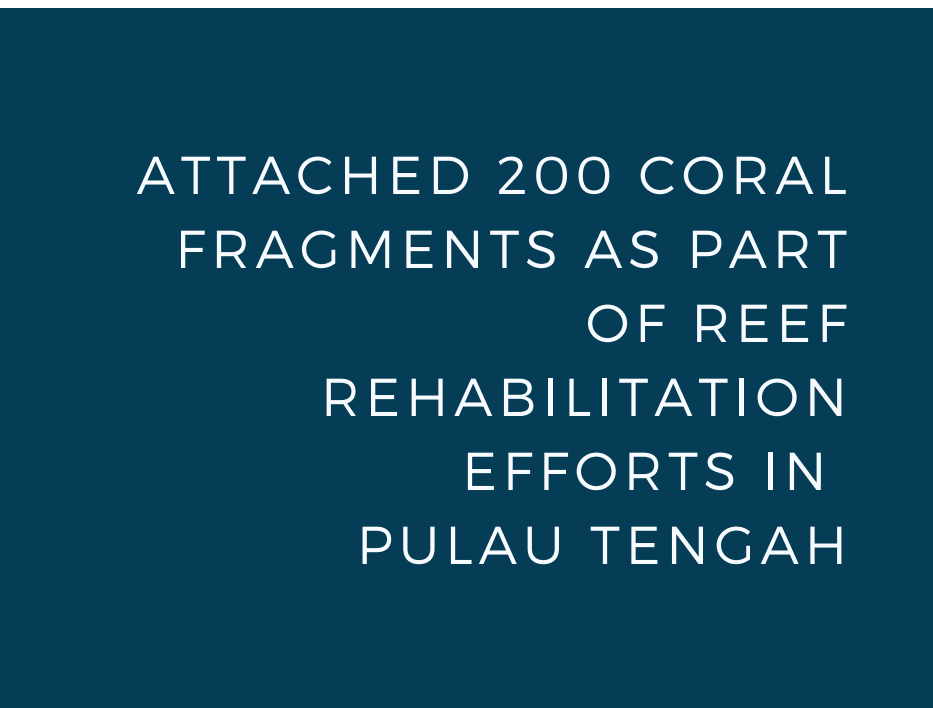




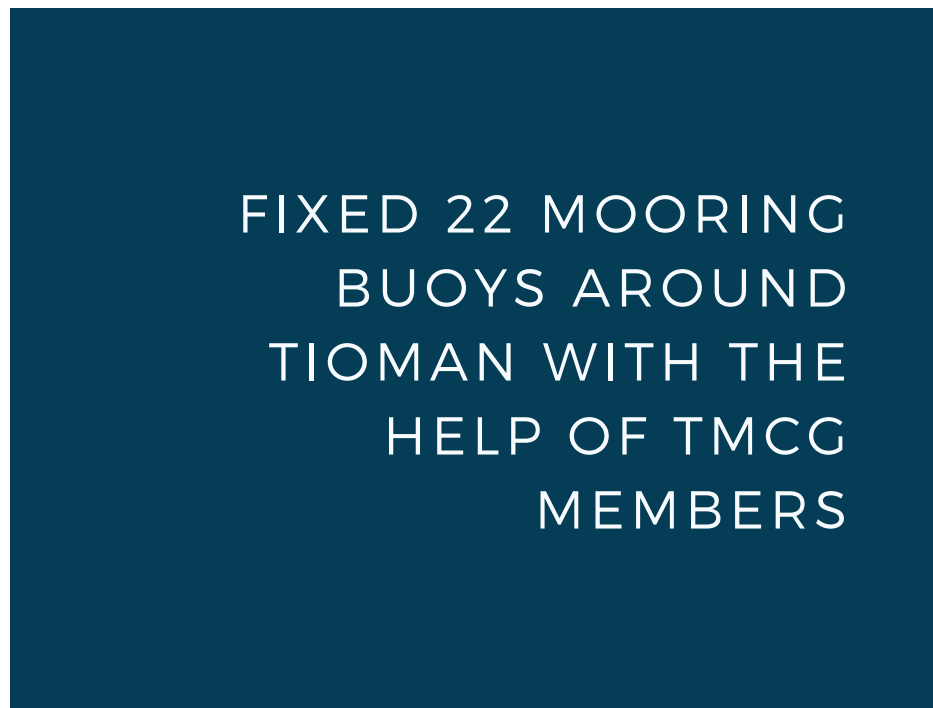
REMOVED 24
GHOSTNETS (2,780 KG)
FROM TIOMAN WATERS



CERTIFIED 20 ECO-
FRIENDLY SNORKEL
GUIDES IN MERSING



ATTACHED 200 CORAL
FRAGMENTS AS PART
OF REEF
REHABILITATION
EFFORTS IN
PULAU TENGAH



FIXED 22 MOORING
BUOYS AROUND
TIOMAN WITH THE
HELP OF TMCG
MEMBERS



ESTABLISHED WASTE
MANAGEMENT SYSTEM
FOR 150 HOUSES IN
MANTANANI ISLAND
COVERING MORE THAN
800 RESIDENTS



SUPPORTED 260
HOUSEHOLDS VIA THE
MANTANANI FOOD
AID PROGRAMME
DURING COVID-19
PANDEMIC



208 posts

353,865
impressions

18,361
engagements

5.2%
engagement
rate



69 posts

78,407
impressions

6,290
engagements

8.0%
engagement
rate



56 posts

31,799
impressions

558
engagements

1.8%
engagement
rate



19 press
coverages

5 radio
interviews



18
webinars

1 scientific
publication

2020

OUTREACH



Meet the RCM Team



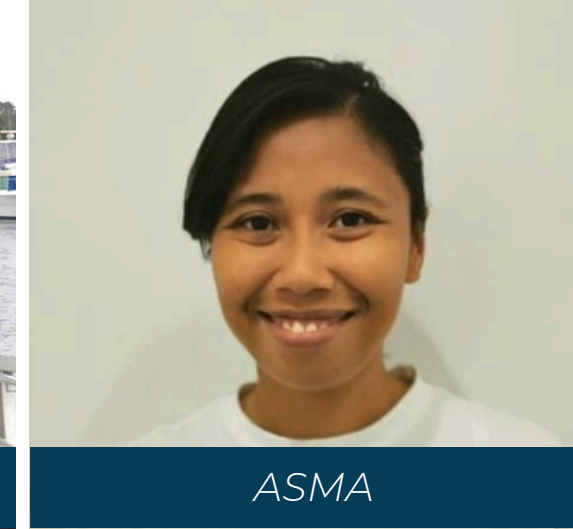
JULIAN



EDMUND



YUN



ASMA



ALVIN



SUE



SHAHIR



NIEZA



IRA



ADZMIN



FAIZAL



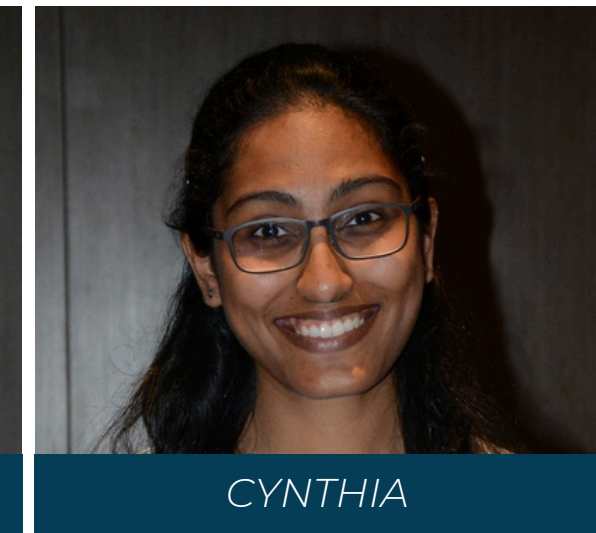
HAMIZAH



JAMIE



THERESA



CYNTHIA



JESSIE



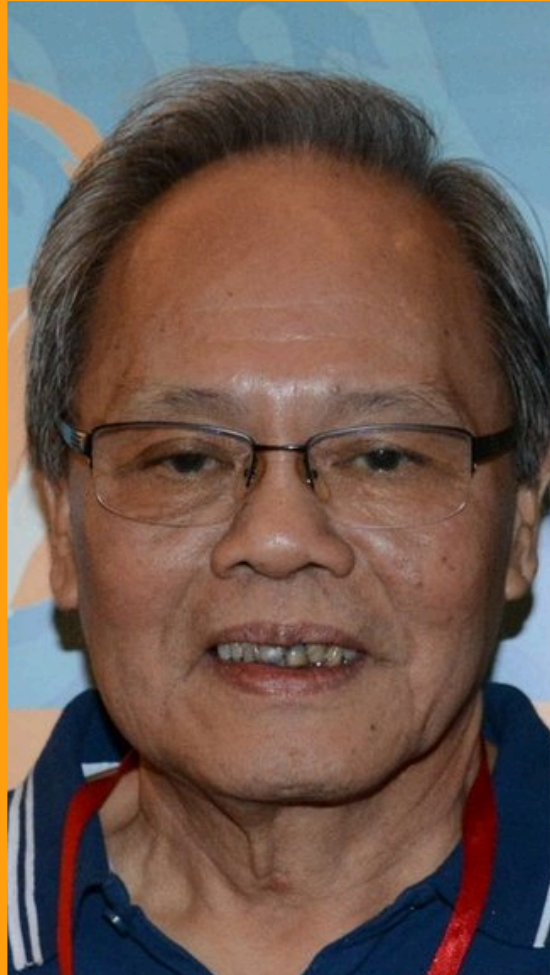
DON



MELYNDA



KIMBELLY



*KEVIN HIEW
WAI PANG*



LIM JIT CHENG



*DATUK HISWANI
HARUN*



RUTH YEOH

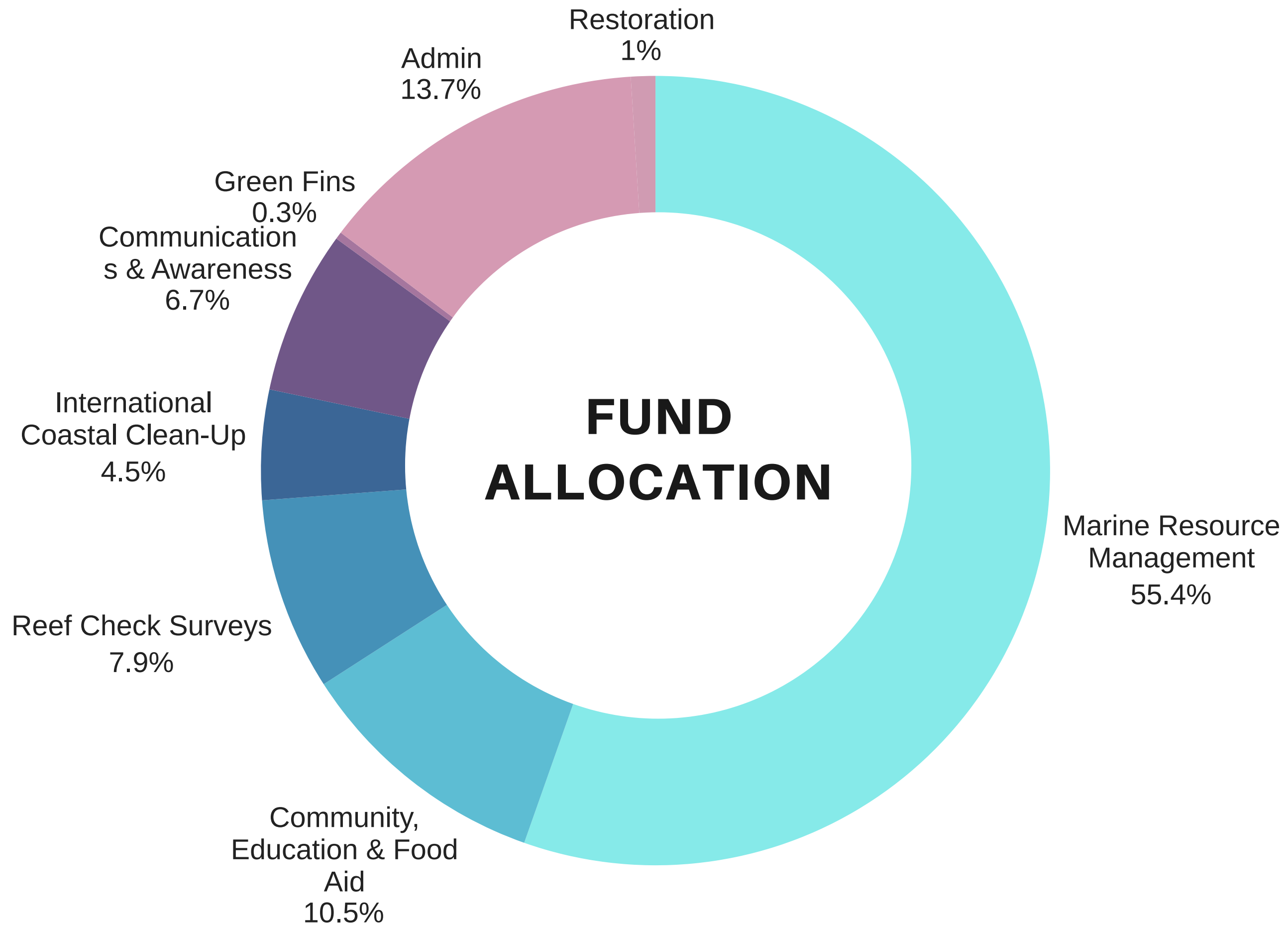


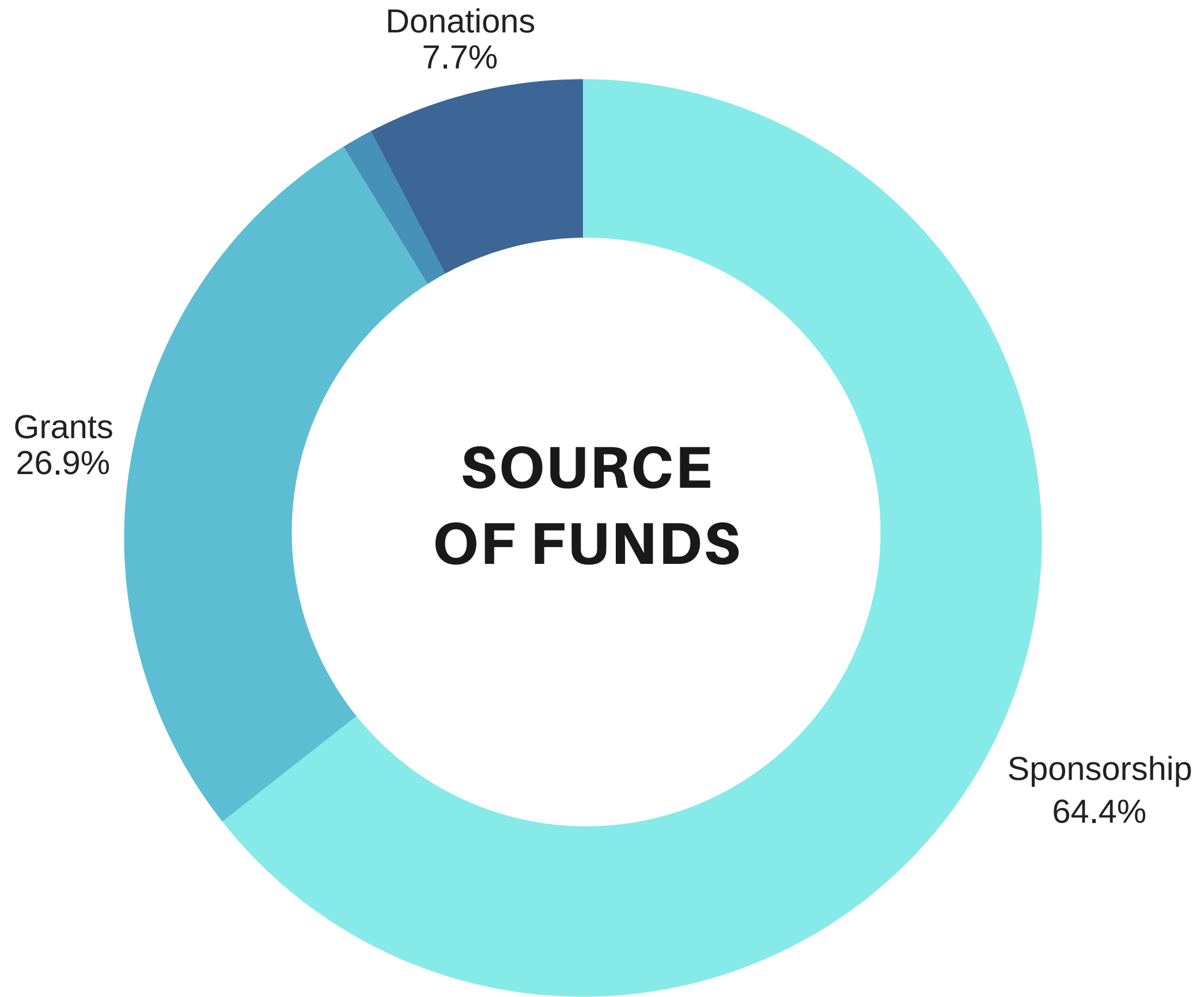
*RALPH
JUSTIN DIXON*

RCM's Board of Trustees

Financial Snapshot



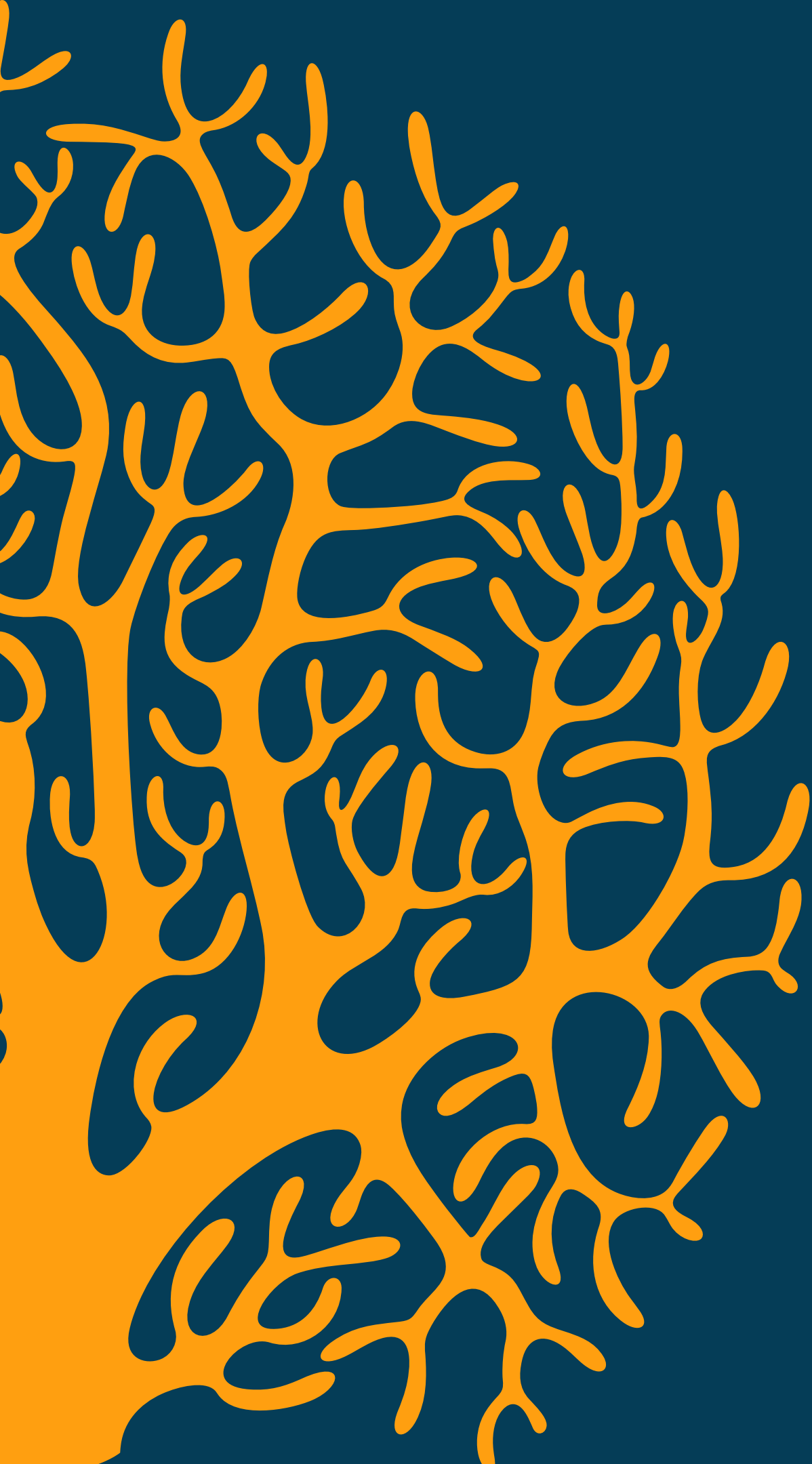




2021 Outlook

Moving forward





Looking forward to 2021, we will be focusing on our new strategy and goals, which have the following key pillars:

- **Strengthening participatory marine resource management**, ensuring local stakeholders have a voice in decisions that affect their lives and livelihoods
- **Introducing resilience into management** to protect reefs, and the communities that rely on them for their livelihoods, against emerging threats such as climate change and ocean warming
- **Improving the policy and legal frameworks for marine conservation**, to put ecosystem protection on a level playing field with economic growth



As a non-profit organization, **your** support is vital to our successes and we thank you for your continued support.

If **you** want to partner with us to help us to achieve our goals, **please get in touch**





Special Thanks

YTL Corporation Berhad



Get in Touch with us



@reefcheckmalaysia



@reefcheckmalaysia



@ReefCheckMY



@reefcheckmalaysia



wecare@reefcheck.org.my



03-2161 5948

